



MIDPENINSULA REGIONAL OPEN SPACE DISTRICT



Preview of Upcoming Multi-use Trail Opportunities
December 13, 2016 REI



Midpen Mission

To acquire and preserve a regional greenbelt of open space land in perpetuity, protect and restore the natural environment, and provide opportunities for ecologically sensitive public enjoyment and education.



Overview of Presentation

Provide an update on public access projects and future regional trail opportunities:

❖ **Status of current trails and public access projects**

- Sierra Azul Open Space Preserve: Mt Umunhum Summit
- La Honda Creek Open Space Preserve
- Bear Creek Redwoods Open Space Preserve
- Ravenswood Bay Trail
- Highway 17 Wildlife and Regional Trail Crossing

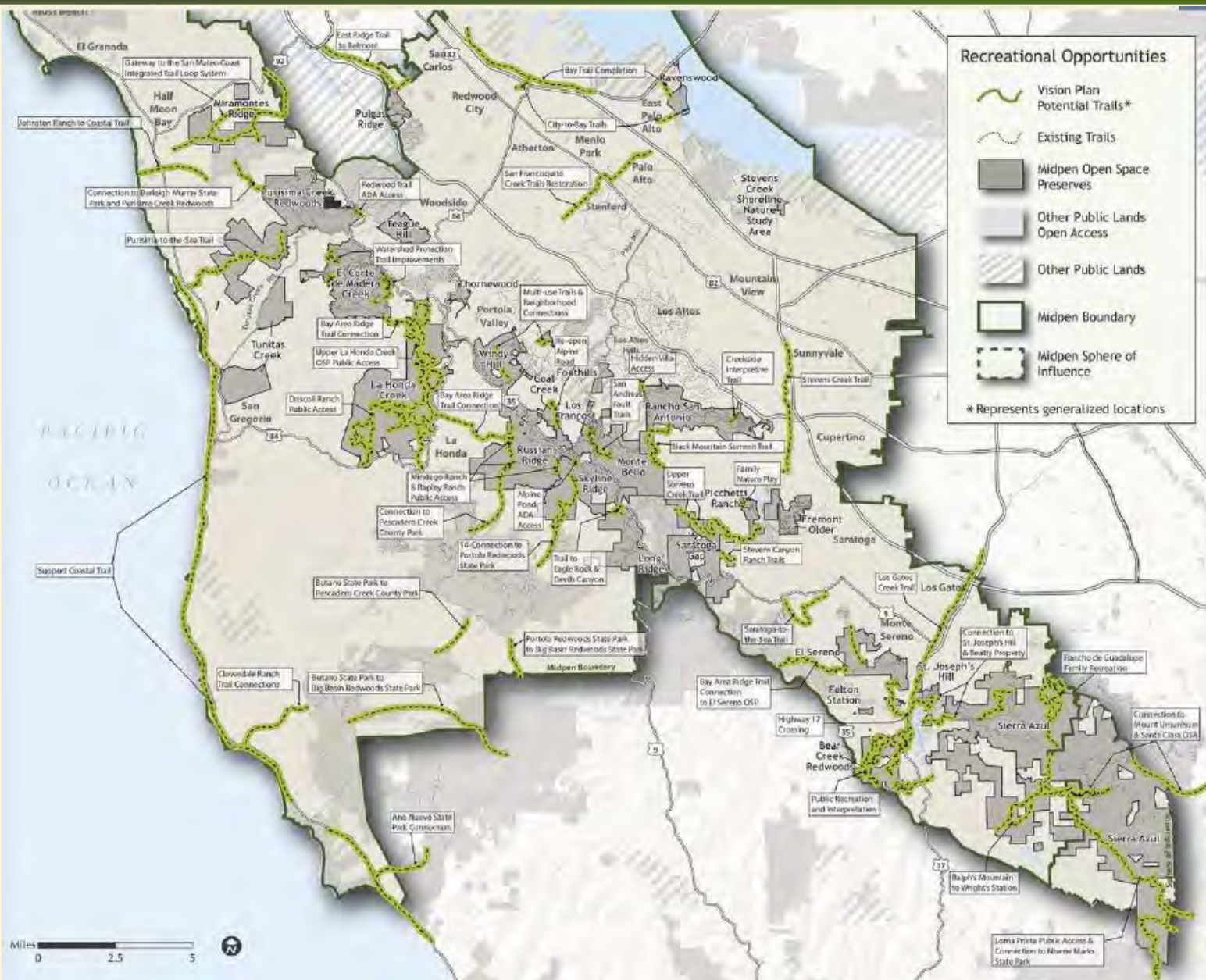
❖ **Future regional trails and public access**

- Bay Area Ridge Trail between La Honda Creek and El Corte de Madera
- Upper Stevens Creek Trail corridor
- Purisima to the Sea Trail corridor



MIDPENINSULA
REGIONAL
**OPEN
SPACE**

2014 Vision Plan – Regional Trail Opportunities





Sierra Azul – Mt Umunhum Summit

MIDPENINSULA
REGIONAL
**OPEN
SPACE**

San Andreas Fault

Over 19,000 tons of deconstructed building materials were used to recontour the summit.

West Summit

As much as possible, the summit will be restored to its original contours. Expansive views of the Pacific Ocean, Midpen preserves, the regional greenbelt, Loma Prieta, ancient redwoods, Santa Cruz and even the Monterey Peninsula can be seen on a clear day.

Native American Ceremonial Space

Honoring the site's 10,000-year Native American history and return to the mountain. It is a place to reflect and renew connections with nature.

Viewing Coves and Stonework

Shelter from the sun and wind as well as excellent views.

Natural and Cultural History

The site's unique cultural, military and natural histories will be shared through interpretive materials.

Stone Curb and Railing
Protections from steep drop-off

FOUNDATION FOR RADAR EQUIPMENT

BAY TREE VIEWING COVE

East Summit

From here, the high point of Mt. Umunhum, one can see Mt. Diablo, Mt. Hamilton and Mt. Tamalpais as well as the valley below.

The Highest Point on the Entire Bay Area Ridge Trail

Viewpoint and Stone Seat Wall
When arriving at the summit, visitors can stop and take in the magnificent views.

Mt. Umunhum Trail

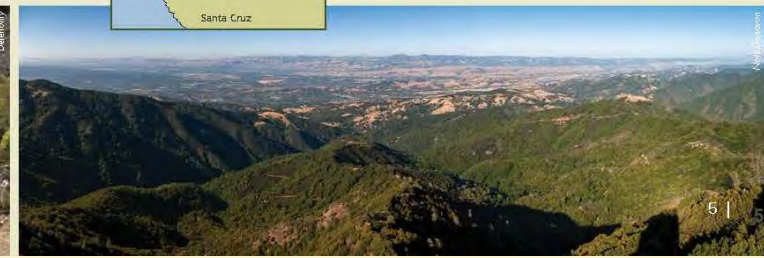
This 4.8-mile multi-use trail passes through multiple habitats and offers both shade and spectacular views above and below.



Restoration Design Group

Trails and Recreation

The gorgeous 4.8-mile Mount Umunhum Trail will extend from the Bald Mountain Parking Area (completed 2014) to the summit, crossing through the varied habitats of the mountain and offering incredible views of the valley below, the ridgelines above, and the other great peaks of the Bay Area. This multi-use trail offers easy-to-moderate terrain for hikers, bicyclists and horseback riders; and, at the summit, will be the highest point on the Bay Area Ridge Trail. Volunteer and docent activities will range from citizen science projects and trail patrol to interpretive hikes and activities.





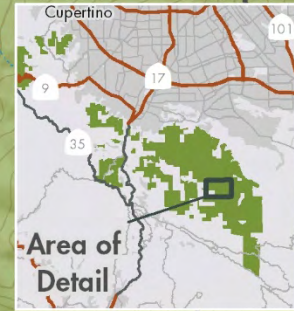
Bald Mtn Parking and Mt Umunhum





MIDPENINSULA
REGIONAL
OPEN
SPACE

Sierra Azul – Mt Umunhum Trail



Mount Umunhum Trail

- MROSD Preserves
- Other Protected Lands
- Private Property
- Mt. Umunhum Summit Trail

Midpeninsula Regional
Open Space District
(MROSD)
December 2016



Miles
0 0.125 0.25





MIDPENINSULA
REGIONAL
OPEN
SPACE

Sierra Azul - Mt Umunhum Trail



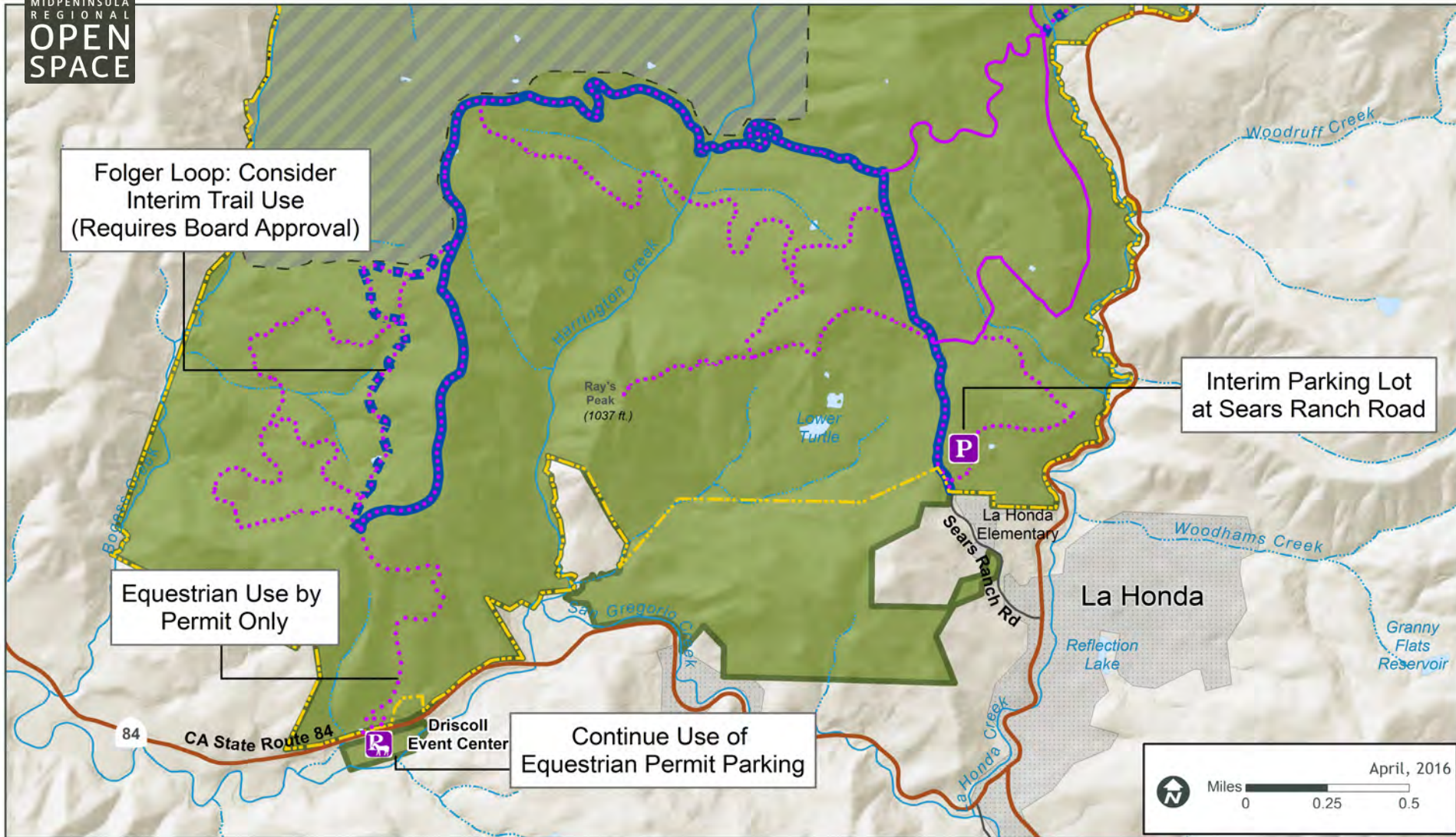
Sierra Azul - Mt Umunhum Summit





MIDPENINSULA
REGIONAL
OPEN
SPACE

La Honda Creek Open Space Preserve



Phase I Trails: Main Ranch Road (Hiking, Equestrian)



Phase I Trails: Folger Loop



Proposed Multiple-Use Public Trails (Hiking, Equestrian, Bicycling)



New Parking Area



Permit Only Equestrian Parking Area



La Honda Creek Master Plan Boundary



Preserve Boundary



La Honda Creek Open Space Preserve

PUBLIC ACCESS TRAILS

| | | |
|----|------------------------------------|-----|
| 1 | Driscoll Ranch Main Access Road | 5.6 |
| 2 | Easy Access Loop Trail | 0.9 |
| 3 | Vista Point Loop Trail | 2.8 |
| 4 | Trail Connection to Red Barn Area | 0.3 |
| 5 | Trail Connection to Driscoll Ranch | 1.5 |
| 6 | La Honda Creek Loop Trail | 4.8 |
| 7 | Redwood Cabin Loop Trail | 2.3 |
| 8 | Interior Loop Trail | 2.4 |
| 9 | Red Barn Loop Trail | 2.0 |
| 10 | Folger Ranch Loop Trail | 3.9 |
| 11 | Harrington Creek Trail | 1.6 |
| 12 | Sears Ranch Loop Trail | 1.9 |
| 13 | Trail to Ray's Peak | 0.1 |

TRAIL USE



All trails open to hiking. Off-trail hiking allowed throughout except in Conservation Management Units.



All trails open to equestrian use, unless site conditions do not allow trail construction to meet District equestrian use standards.



Pending resource agency approval: multiple-use on (1) the northeastern section of the Driscoll Ranch Road from Sears Ranch Road to the Red Barn area, (2) a portion of the La Honda Creek Loop Trail, and (3) the designated Bay Area Ridge Trail once one safe, through connection is secured (see legend).



Trails north of Vista Point open to dogs on leash after grazing program is established; also, work with existing grazing tenant to identify suitable trail loop off Sears Ranch Road for dogs on leash.

Public Access Phase II



Existing Public Trails
(Hiking, Equestrian)



Proposed Public Trails
(Hiking, Equestrian)



Proposed Multiple-Use Public Trails
(Hiking, Equestrian, Bicycling)



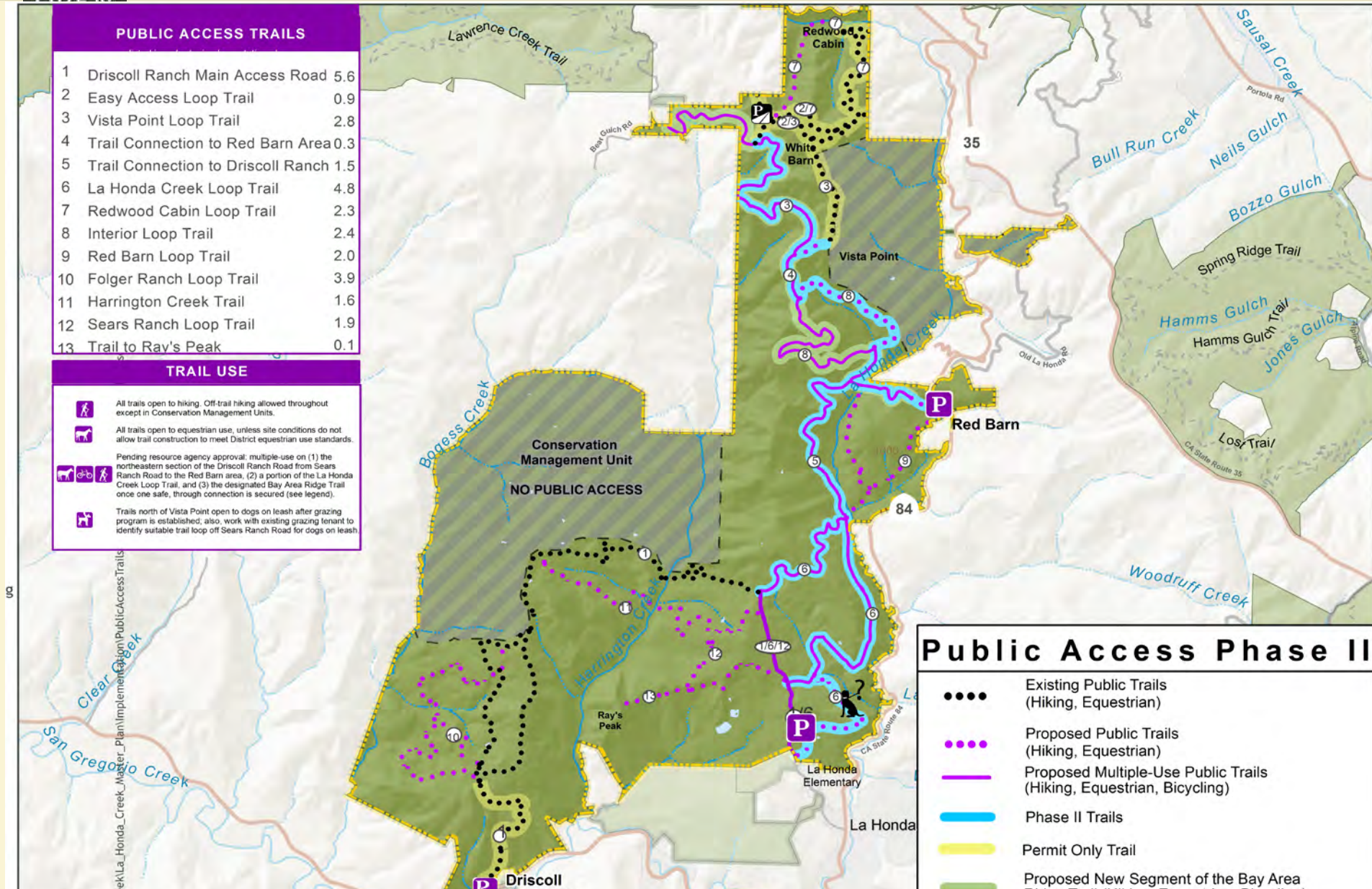
Phase II Trails



Permit Only Trail



Proposed New Segment of the Bay Area Ridge Trail





Bay Area Ridge Trail Gap btw. LHC and ECdM



Bay Area Ridge Trail Gap between La Honda Creek and El Corte de Madera Creek

- MROSD Preserves
- Other Protected Lands
- Private Property
- Existing Bay Area Ridge Trail

Midpeninsula Regional
Open Space District
(MROSD)
December 2016

Miles
0 0.75 1.5





MIDPENINSULA
REGIONAL
OPEN
SPACE

Bay Area Ridge Trail Gap btw. LHC and ECdM

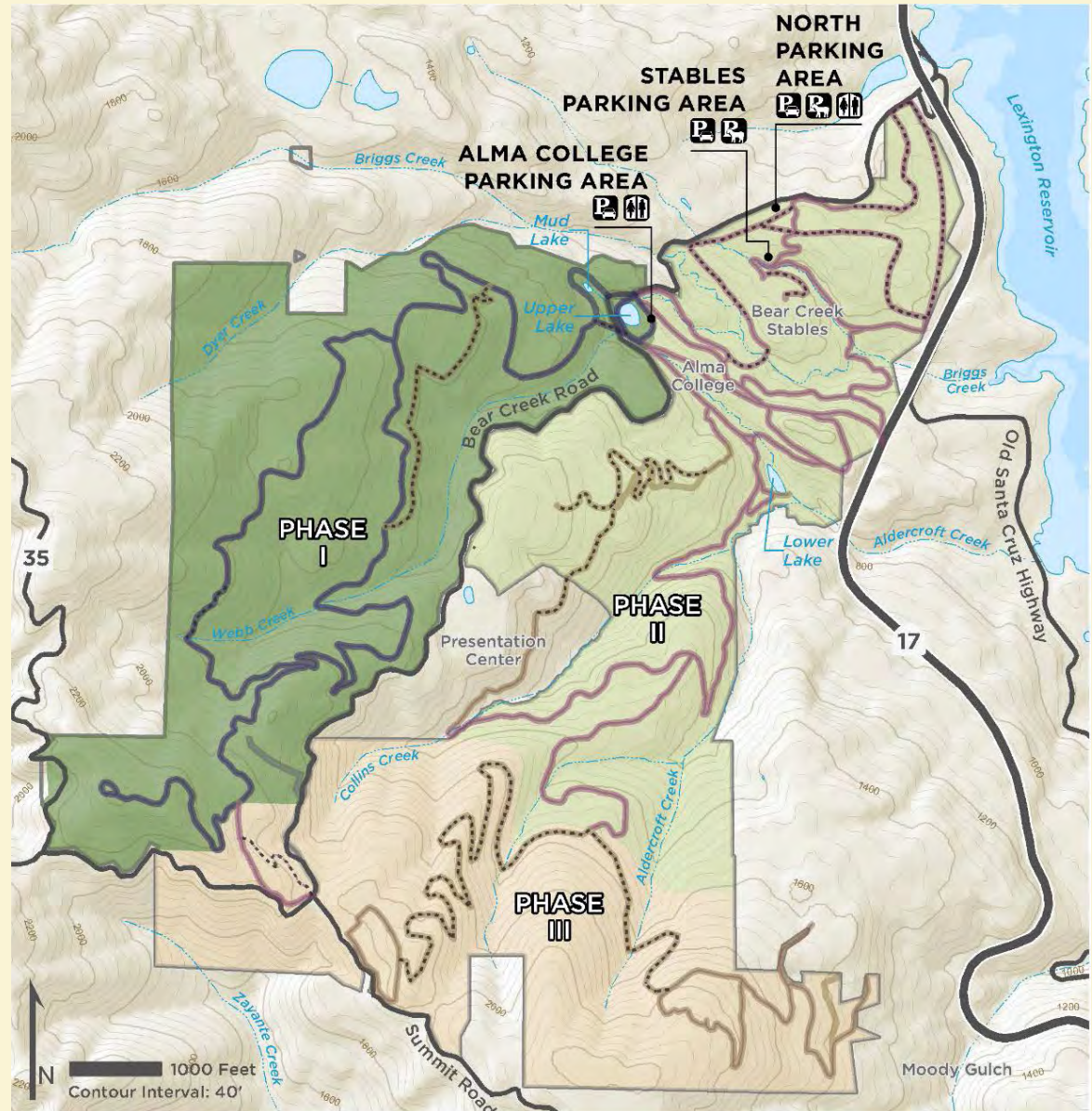


BCR preserve plan IMPLEMENTATION PHASING

Phase I: 2017-2019

Phase II: 2020-2026

Phase III: 2027-2036

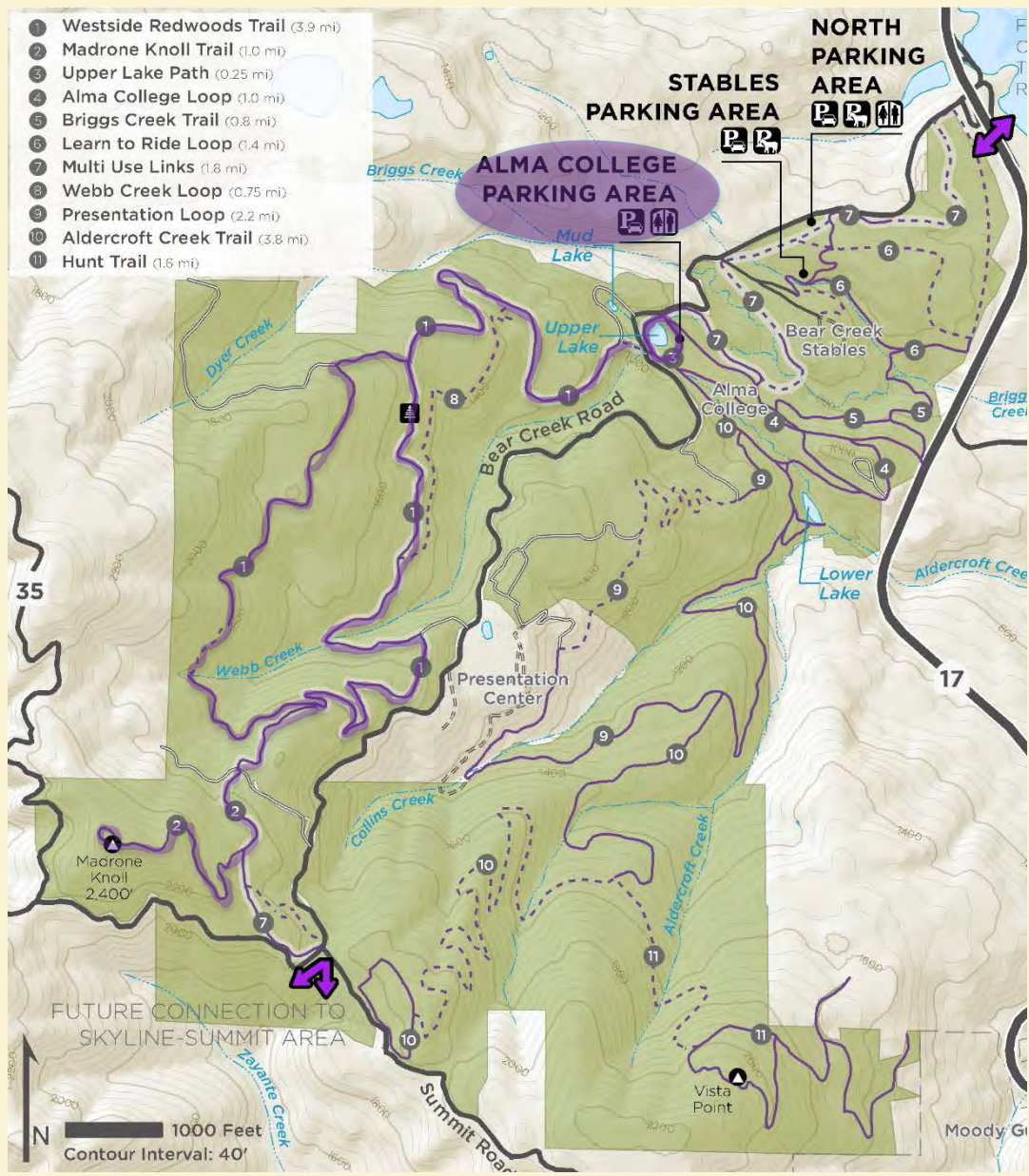




BCR preserve plan PHASE I 2017-2019

Western Zone

- Improve Trails - Vegetation management and drainage upgrades, Webb Creek Bridge replacement
- Pond stabilization
- Preserve entrance and parking lot at former Alma College; pedestrian/trail crossing at Bear Creek Road; culvert repair
- Stables tenant lease, renovation designs, water system engineering
- Alma College safety and security, bat relocation, rehabilitation designs

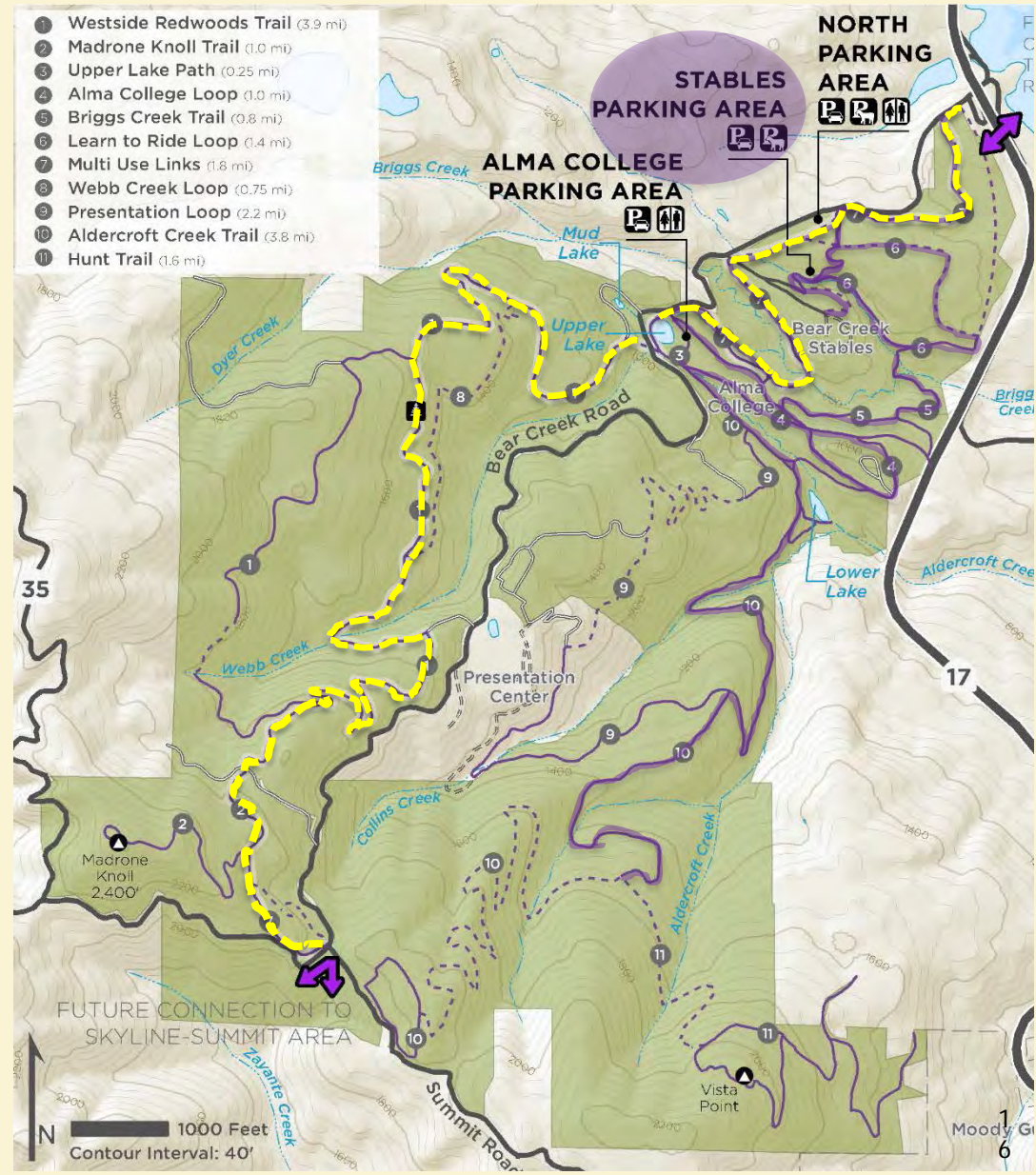




BCR preserve plan PHASE II 2020-2026

Eastern Zone

- Improve trails – road removal, vegetation management, drainage upgrades
- Construct 3 new bridges
- **Multi-use trail connections and construction**
- High priority Stables renovations
- Alma College site rehabilitation

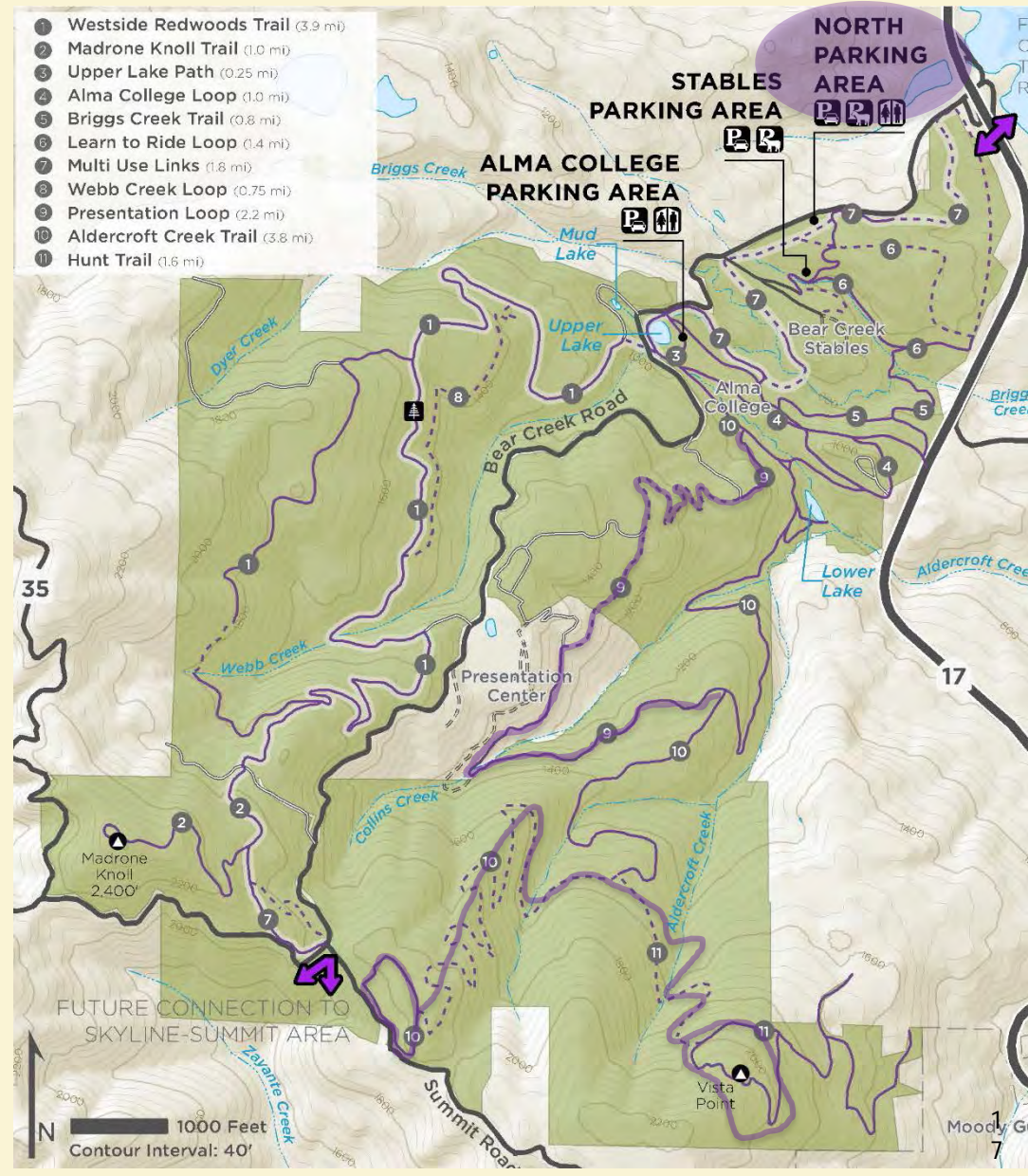




BCR Implementation PHASE III 2027-2036

Complete Eastern Zone

- Construct new trail to complete eastern Preserve connection to Summit Road area
- Construct North Parking Area (lower lot)
- Partnership to re-use Alma College chapel and site
- Lower Priority Stables improvements





Ravenswood Bay Trail

MIDPENINSULA
REGIONAL
OPEN SPACE

CONCEPT PLAN AT RAVENSWOOD

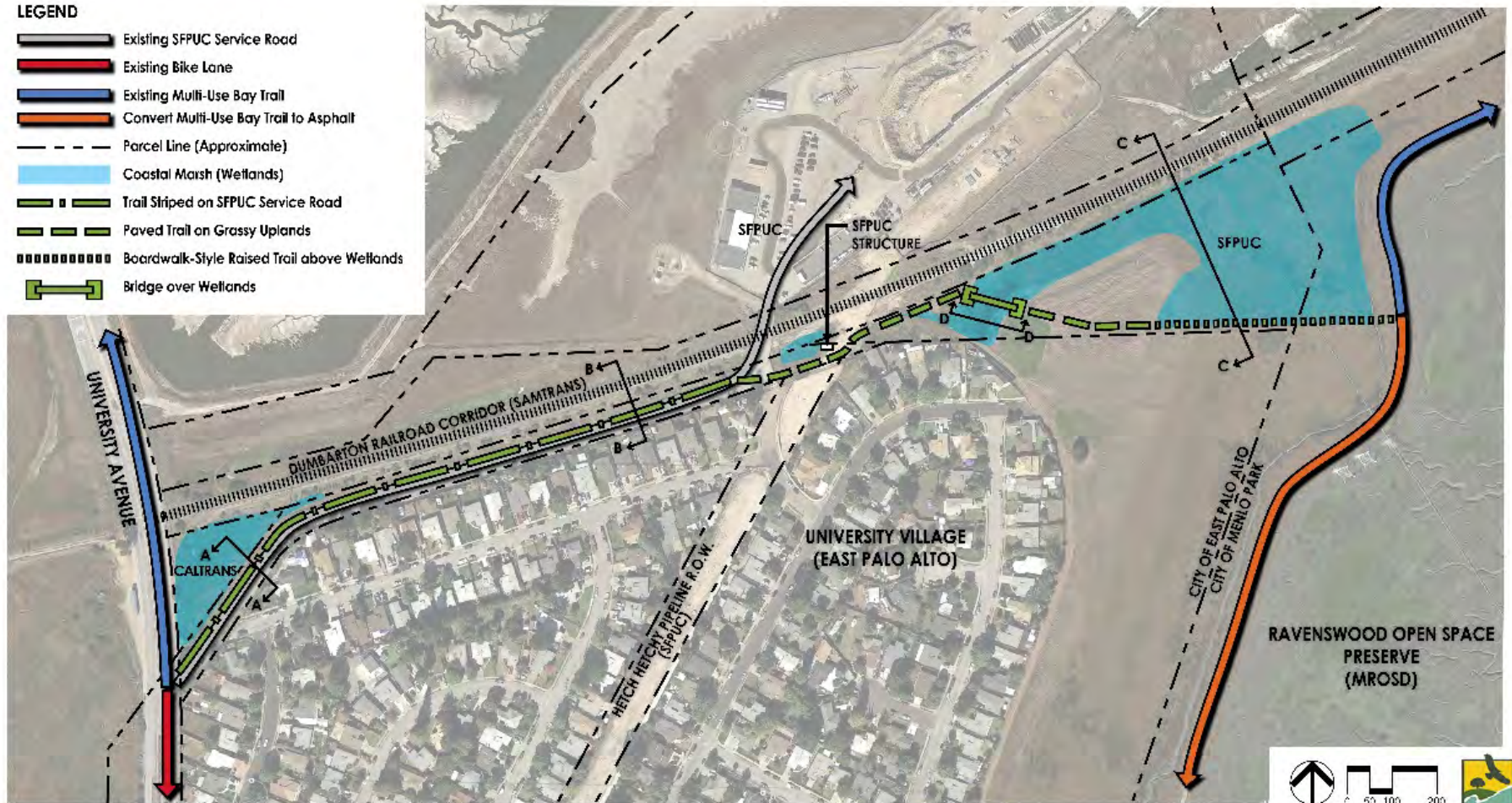
Planning and CEQA Consulting

January 09, 2016

CONCEPTUAL TRAIL ALIGNMENT

LEGEND

- Existing SFPUC Service Road
- Existing Bike Lane
- Existing Multi-Use Bay Trail
- Convert Multi-Use Bay Trail to Asphalt
- Parcel Line (Approximate)
- Coastal Marsh (Wetlands)
- Trail Striped on SFPUC Service Road
- Paved Trail on Grassy Uplands
- Boardwalk-Style Raised Trail above Wetlands
- Bridge over Wetlands



Callander Associates
Trail Planning and Implementation

DAVID J. POWERS
Principal

Eclic Resources Group



0 50 100 200





Ravenswood Bay Trail

MIDPENINSULA
REGIONAL
OPEN SPACE

OPEN SPACE NAIL CONCEPT PLAN AT RAVENSWOOD

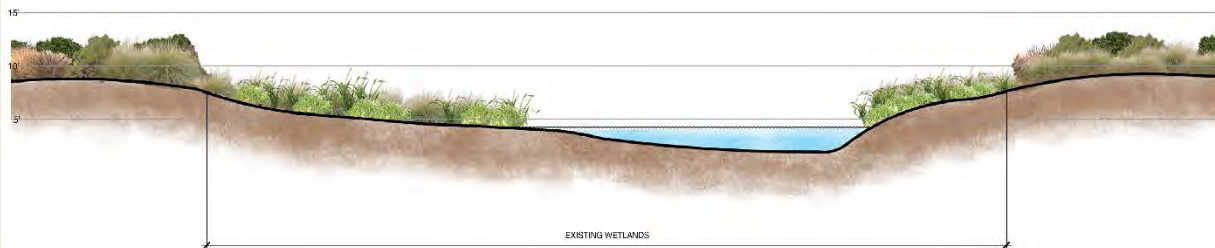
Planning and CEQA Consulting

January 09, 2016

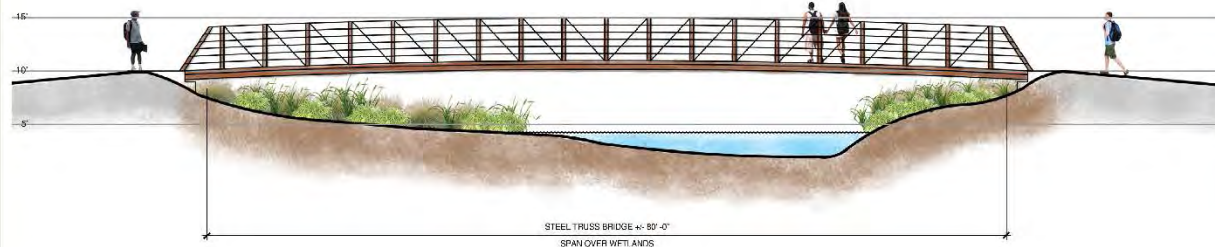
CONCEPTUAL CROSS SECTIONS

Section D - Bridge

EXISTING CONDITIONS



PHASE I



Illustrative Images



SIMILAR STEEL TRUSS BRIDGE



EXISTING CONDITION



Ravenswood Bay Trail

MIDPENINSULA
REGIONAL
OPEN
SPACE

TRAIL CONCEPT PLAN AT RAVENSWOOD

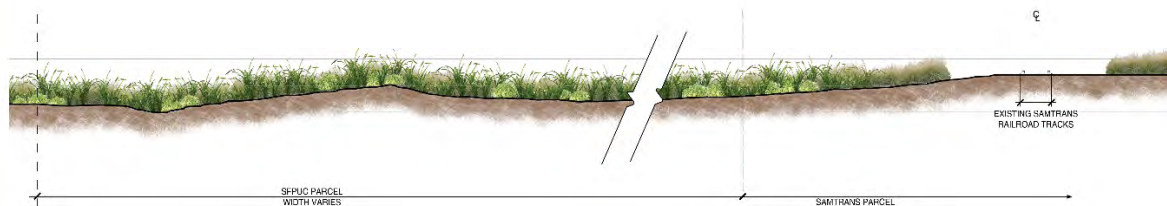
Trail Planning and CEQA Consulting

January 09, 2016

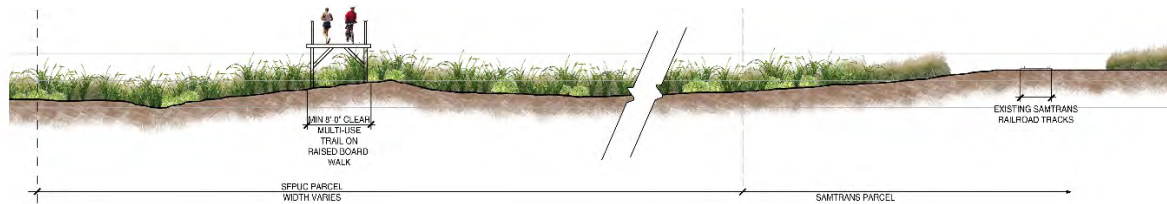
CONCEPTUAL CROSS SECTIONS

Section C - Wetlands

EXISTING CONDITIONS



PHASE I



Illustrative Images



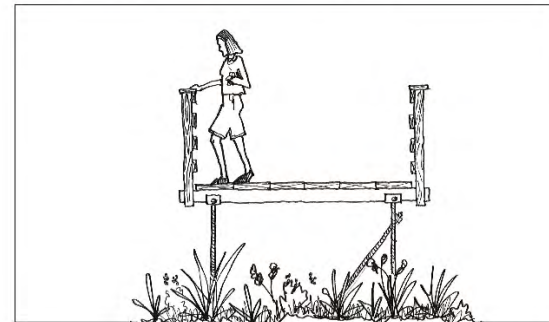
WOOD DECKING WITH WOOD RAILINGS



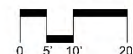
INSTALLATION OF SMALL-FOOTPRINT POSTS



WOOD BOARDWALK DECKING



CONCEPTUAL SKETCH OF BOARDWALK CROSS SECTION





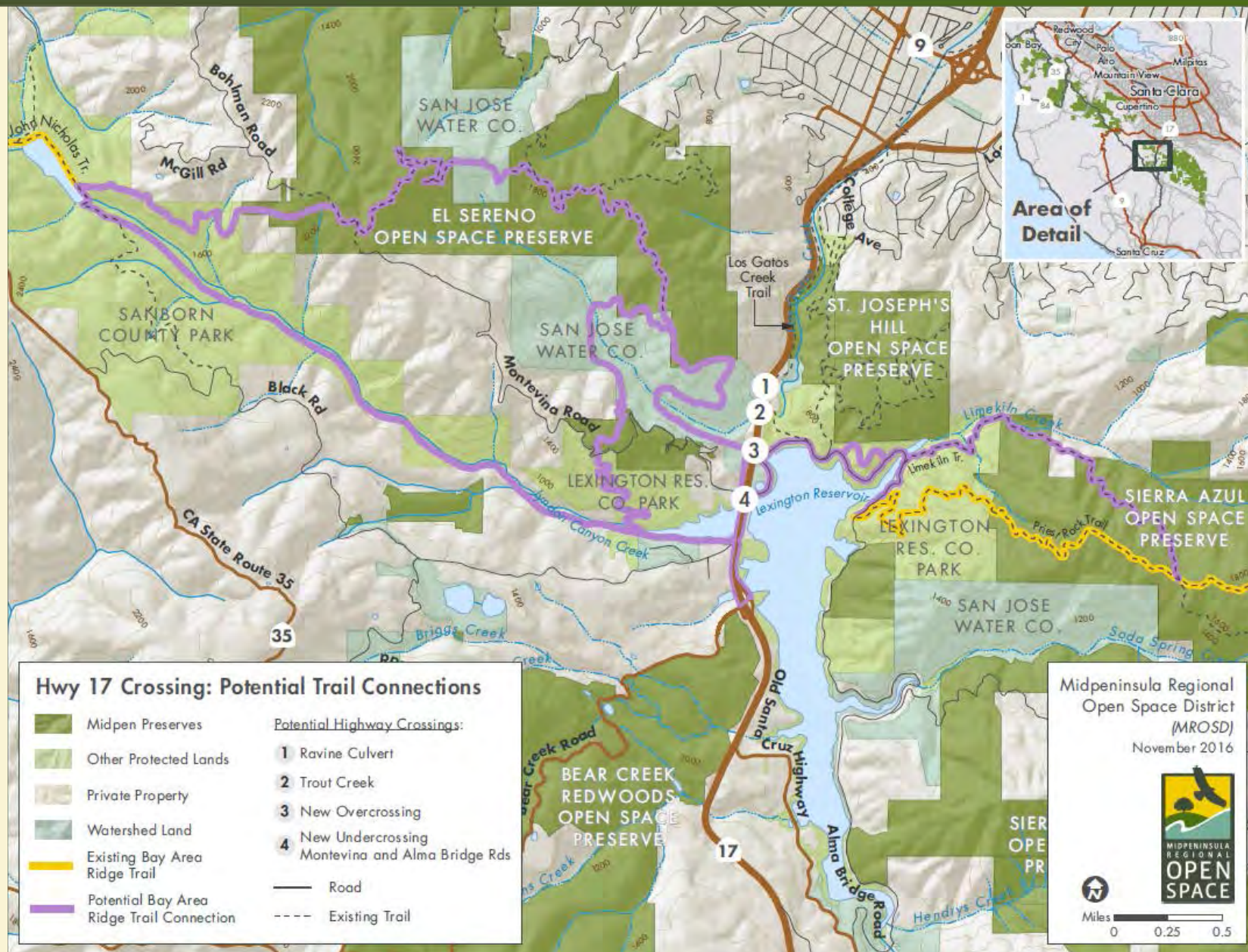
Ravenswood Bay Trail

| | |
|--|-----------------------------|
| CEQA Certification & Trail Easement Approval | November 16, 2016 |
| Trail Design and Engineering | Now- Summer 2017 |
| Project Permitting | Summer 2017- Summer 2018 |
| Trail Construction | Summer 2018 |



MIDPENINSULA
REGIONAL
OPEN
SPACE

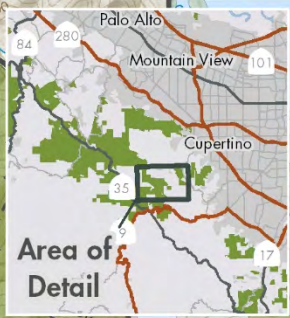
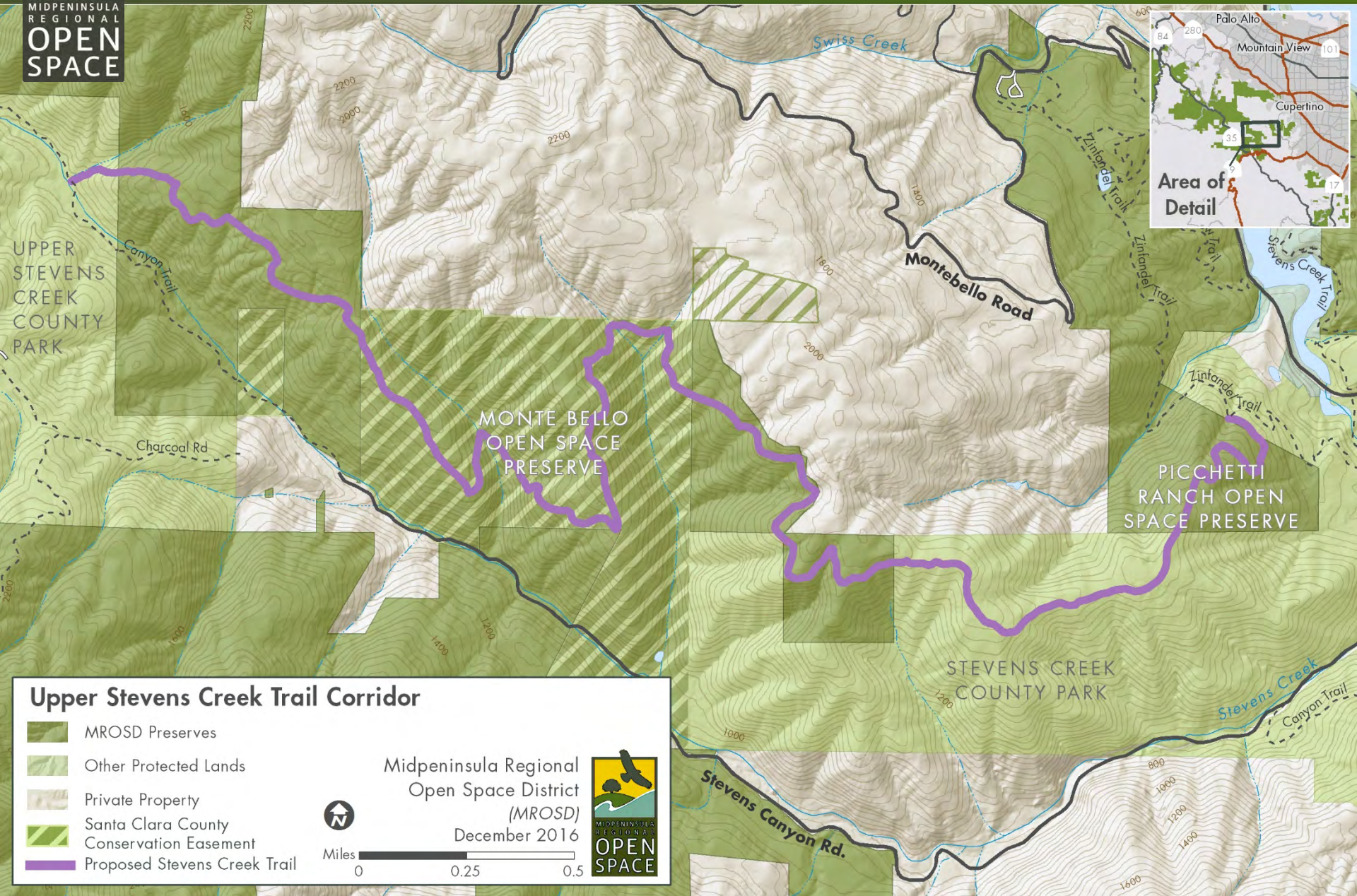
Highway 17 Wildlife & Regional Trail Crossing





MIDPENINSULA
REGIONAL
**OPEN
SPACE**

Upper Stevens Creek Trail Corridor



Upper Stevens Creek Trail Corridor

- MROSD Preserves
- Other Protected Lands
- Private Property
- Santa Clara County Conservation Easement
- Proposed Stevens Creek Trail



Miles
0 0.25 0.5

Midpeninsula Regional
Open Space District
(MROSD)
December 2016

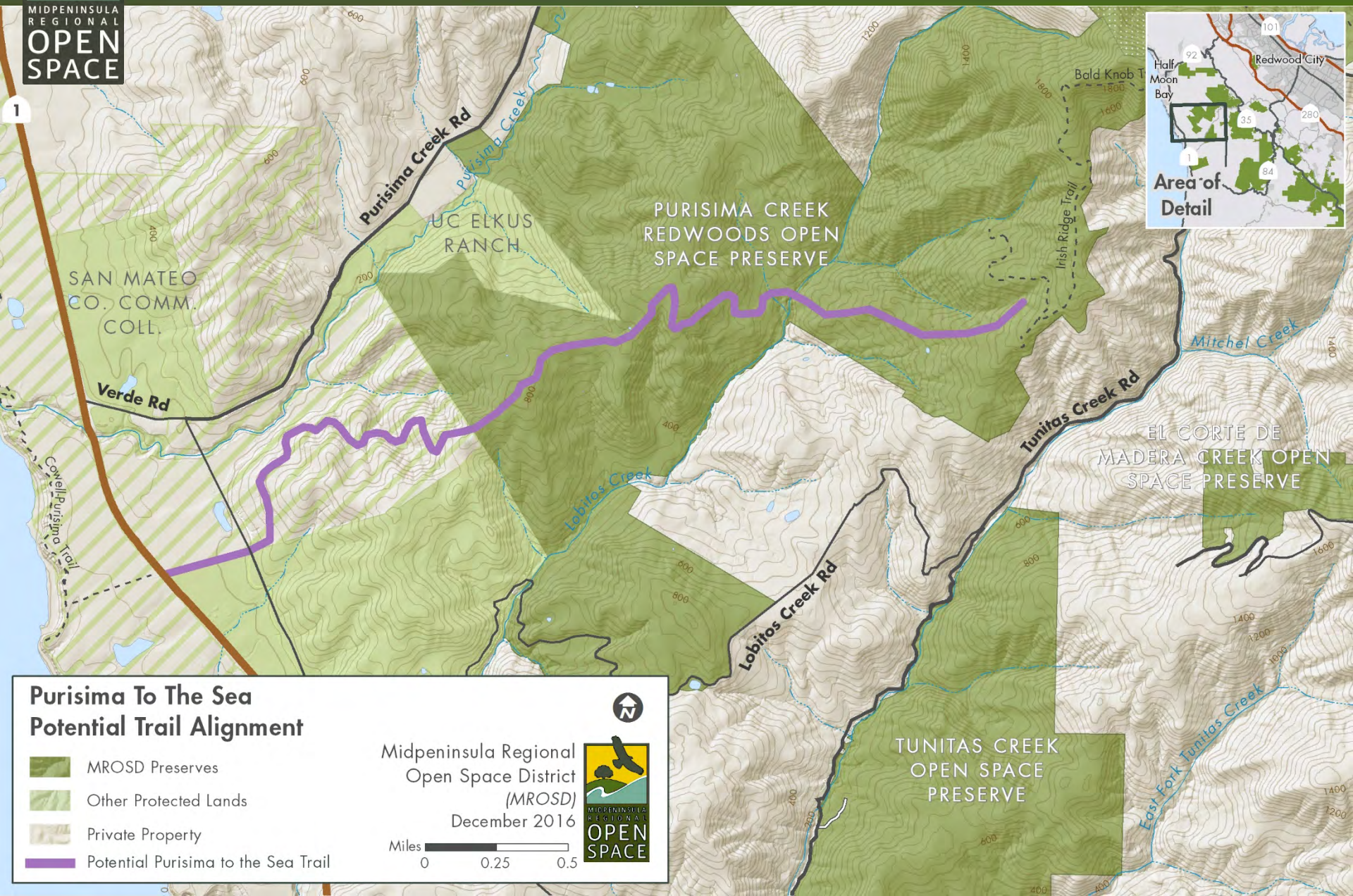


MIDPENINSULA
REGIONAL
**OPEN
SPACE**



Purisima to the Sea Trail

MIDPENINSULA
REGIONAL
OPEN
SPACE



Purisima To The Sea Potential Trail Alignment

- MROSD Preserves
- Other Protected Lands
- Private Property
- Potential Purisima to the Sea Trail

Midpeninsula Regional
Open Space District
(MROSD)
December 2016

Miles 0 0.25 0.5





Purisima to the Sea Trail Timeline

| | |
|--|-----------|
| Land Transfer and Site Clean Up | 2017/2018 |
| Scope Trail Route and Identify Parking | 2018/2019 |
| Planning, Design and Permits | 2019/2020 |
| Engineering and Construction | 2021/2022 |
| Opening | 2022 |

Target Dates for New Trails

2016

Russian Ridge -
Mindego Hill
Trail Opened

2017

Mt Umunhum
Summit

Mt Umunhum Trail

Lower La Honda
Creek Preserve

2018

Bear Creek Redwoods
Preserve (Western
Zone)

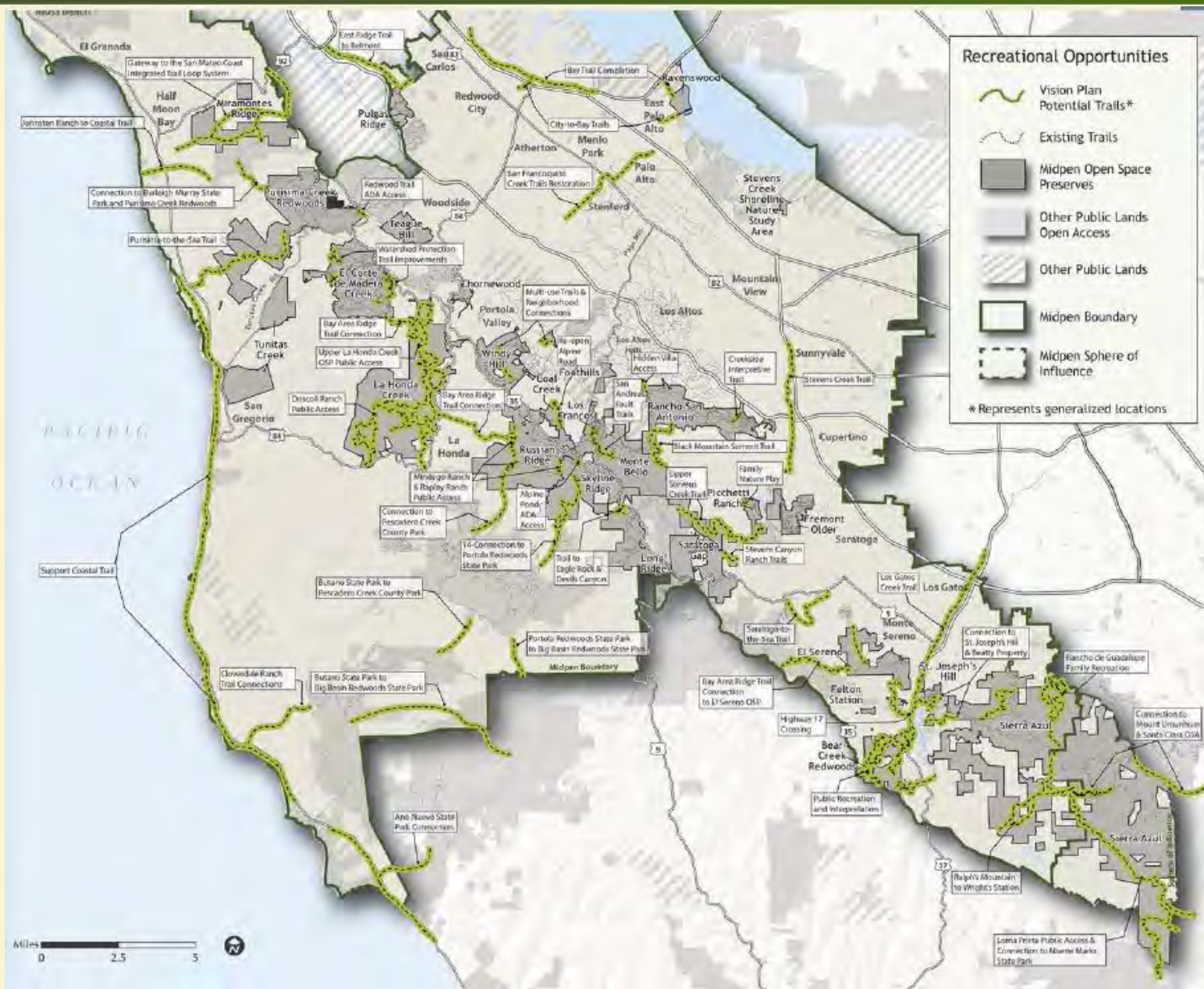
Ravenswood Bay Trail

El Corte de Madera
Oljon Trail

On-going Real Property & Planning Work



Conclusion





MIDPENINSULA
REGIONAL
OPEN
SPACE

Questions?

